

# Montpellier

THE PERFECT BALANCE OF FUNCTION AND STYLE

LAUNDRY - DISHWASHING - COOKING - COOLING

## Installation and Operating Instructions



**Chimney Cooker Hood: Multiple Models**  
60, 70, 90 & 100cm - Stainless Steel & Black

Please read these instructions carefully before attempting to install or use this appliance.  
We recommend that you keep these instructions in a safe place for future reference.

# Welcome

---

Thank you for choosing this Montpellier Cooker Hood.

Our Hoods has been designed to provide you with the best combination of style, reliability and performance to give you years of trouble-free use.

You may be familiar with a similar product, but please take time to read these instructions carefully before installing or using your Cooker Hood to ensure you get the most from your purchase.

We recommend that you keep this manual in a safe place for future reference.



**2**  
**YEAR**  
**GUARANTEE**  
— PARTS & LABOUR —  
ACROSS ALL OUR MODELS  
**Montpellier**  
www.montpellier-appliances.com

Your Cooker Hood is covered by a comprehensive two year Parts & Labour Guarantee. In the unlikely event that you experience a problem with your Hood, you can rest assured that you are fully protected against the cost of repairs for the first 24 months . Please note that any claim must be accompanied by the model reference number, serial number and proof of purchase.

To activate your guarantee, you will need your product serial number. This can be found on the rear of the machine.

There are two ways to register your Guarantee:

- **Online:** Visit the Support page on our website and complete the online Product Registration form. [www.montpellier-appliances.com](http://www.montpellier-appliances.com)
- **By Post:** Simply detach and fill in the form provided, attach a stamp and send it in the post. Don't forget to include your e-mail address so that we can send confirmation through to you.

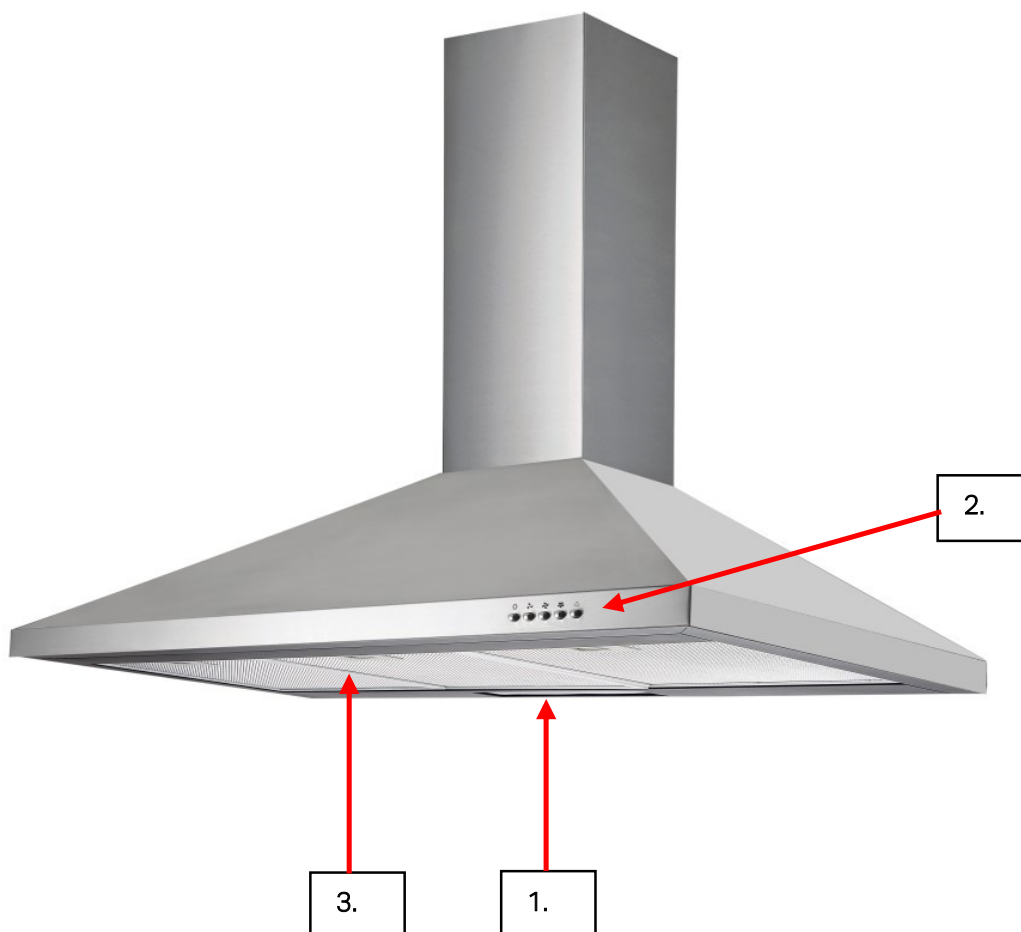


**Note:** We are unable to take registrations over the phone.

---

# Description of the Appliance

The following image is shown as an example only as the actual features and controls may vary on the model supplied.



## 1. Light

The position and number of lights may vary.

## 2. Function Control Panel

The position may vary and your model may be fitted with push button controls or electronic 'touch' controls.

## 3. Filter(s)

Your model will have either one, two or three filters.

## CONTENTS:

Section 1. Installation

Section 2. Safety Advice

Section 3. Operating the Appliance

Section 4. Maintenance

# Section 1. Installation

**A qualified installer must carry out the installation.**

This appliance can be used fully 'vented' via a ducting hose and external wall vent, or in 're-circulation' mode by using the charcoal filter provided. The cooker hood should ideally be installed between 65-75cm above the work surface/cooker hob. DO NOT INSTALL BELOW 65cm (See Pic.1)

**N.B. To ensure that your cooker hood operates efficiently the hose length must not exceed 2m with a maximum of one bend.**

## Ducting & Ventilation:

For best performance and lowest noise output, we recommend use of 150mm ducting. Kit included.

1. The cooker hood should be placed at a distance of 65-75cm (26-30inch) from the cooking surface for the best effect. See the Pic 1.

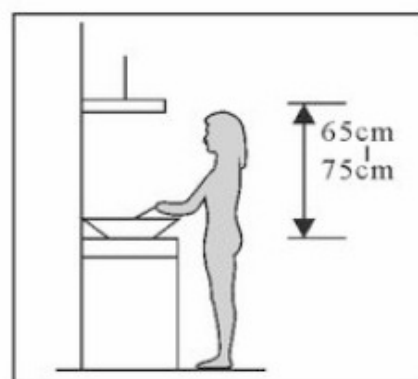
2. Install the hook on a suitable place once the installation height is fixed, and keep it in line. The fixed position of the inside chimney bracket is the place of chimney.

3. Fix the outside chimney bracket on the outside chimney, and be sure that the inside chimney can be adjusted the height in in freely as well as fixing the extensible pipe. Afterwards, install the extensible pipe and chimney on the cooker hood. See Pic 3.

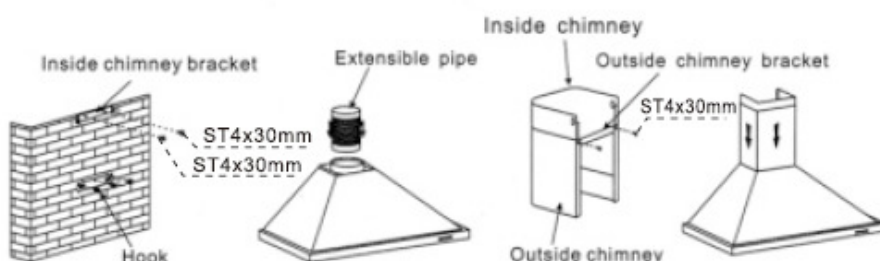
4. Put the cooker hood on the hook. See Pic 4.

5. Adjust the height of the inside chimney to the position of the inside chimney bracket and fix on it by screw, after adjusting the position, fix the body with safety screw. See Pic 5.

Note: The two safety vents are positioned on the back casing, with diameter of 6mm.

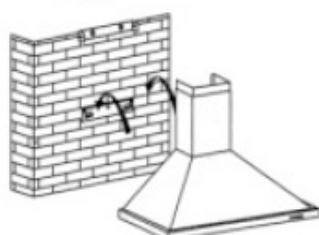


Pic1

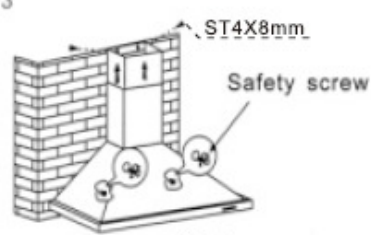


Pic2

Pic3



Pic4



Pic5

## Section 2. Safety Advice

This appliance is manufactured and intended for DOMESTIC use only. Any guarantee offered with the appliance is not valid for any installation in a commercial environment.

This appliance incorporates stainless steel. Handle with care as some of the edges may be sharp.

The main filter must be cleaned on a regular basis in order to help maintain the appliance in good working order.

Always turn off the electricity supply before cleaning the filter or the appliance exterior.

When replacing the bulbs/LED's or charcoal filter, ensure that you fit a 'like for like' replacement.

We recommend that this appliance is installed by a professional installer.

This appliance shall not be used by children aged from 8 years and above and persons with reduced physical, sensory or mental capabilities, or lack of experience and knowledge, unless they have been given supervision or instruction on how to use of the appliance in a safe way and understand the hazards involved. Children shall not play with the appliance. Cleaning and user maintenance shall not be made by children without supervision.

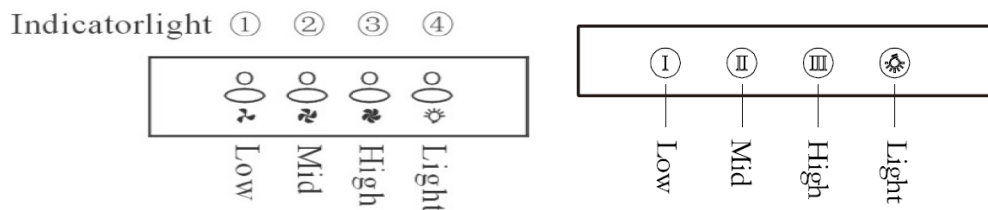
If the power supply cord is damaged, it must be replaced by the manufacturer, it's service agent or similarly qualified persons in order to avoid a hazard.

## Section 3. Operating the Appliance

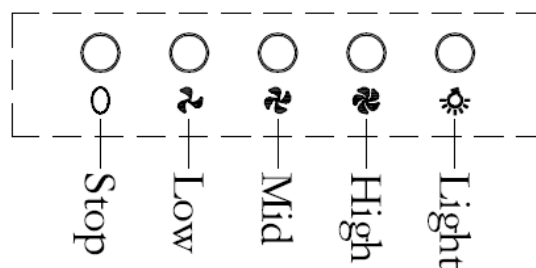
N.B. For best results, we recommend that the Cooker Hood is switched on at least 10 minutes prior to cooking and left to run for a period of 10 minutes after cooking is finished.

### 3.1. Electronic 'Touch' Controls

1. Turn on the power; the buzzer will buzz five times. The sound shows that the appliance is powered.
2. Push the low button, the indicating light 1 on, the buzzer will buzz once, and the motor runs at low speed. Push it again and the motor will stop.
3. Push the middle button, the indicating light 2 on, the buzzer will buzz once, and the motor runs at mid speed. Push it again and the motor will stop
4. Push the high button, the indicating light 3 on, the buzzer will buzz once, and motor runs on high speed. Push it again and the motor will stop
5. Push the light button; the indicating light 4 on, and the two lighting lamps will come on. Push it again and the lamps will turn off, with every push the buzzer will buzz one time.



### 3.2. Push Button Controls

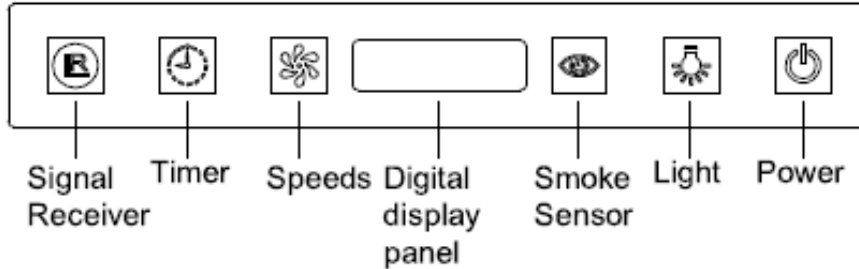


1. Push stop button, and the motor will stop.
2. Push the low button, and the motor runs at low speed.
3. Push the mid button, and the motor runs mid speed.
4. Push the high button, and the motor runs high speed.
5. Push the light button, and the two lights will come on. Push it again and the light will turn off.

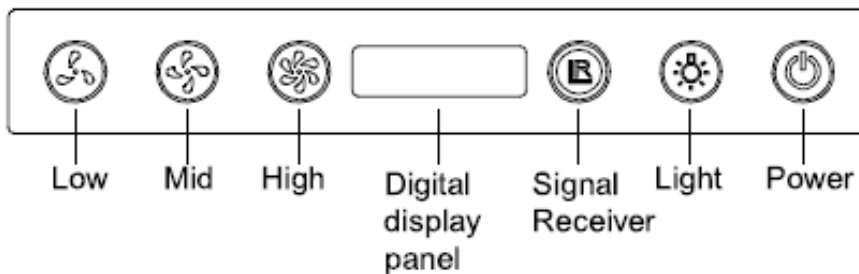
### 3.3. Remote Control

If your model is supplied with a remote control (CHC612BLKREM, CHC612MSSREM & CHC1012MSSREM only), please note the following:

#### Touch Control Switch No.One:



#### Touch Control Switch No.Two:



#### Touch Control Switch No.Three:



1. The signal receiver by remote control.
2. Timer, which can set from one minute to 60 minutes.
3. Speeds, which can be adjustable by sequence from high speed, to mid and to low until the motor stops running.
4. Smoke sensor which can detect the fumes and get the motor start to absorb the fumes by automatically when it's powered on.
5. Light on/off.
6. Power off.
7. Touch one time, it will time one minute to turn off the power, Touch twice successively, it will turn the power off directly.
8. Speed adding from low to mid, and to high by sequence.
9. Speed descending by sequence from high to mid, and to low until the power stops running.



## Section 4. Maintenance

### 4.1. Cleaning the Main Filter

If your cooker hood has aluminium filters, simply remove the filter panels and wash them in clean soapy water, ensuring that they are dry prior to refitting.

If you have charcoal filters, remove the aluminium filter panels and replace the charcoal filter(s) with like for like replacements.

### 4.2. Replacing the LED Unit(s)

To replace a LED(s), isolate the power, remove the light cover and remove the LED. Replace it with the same type/wattage and replace the light cover. Please note that Bulbs & LED lights are not covered by your guarantee.

### 4.3. What to do if something goes wrong

The light does not work:

- A LED has probably failed. Replace the LED as referred to in Section 4.2. Please note that lights are not covered by any guarantee offered with this appliance.

Motor operates but level of extraction appears to be poor:

- Check and clean the filter as detailed in Section 4.1. Dirty filters will cause a noticeable drop in performance. If you are using the appliance on 're-circulation' mode the charcoal filter may require changing as detailed in Section 4.1.
- If the length of flexible extraction hose exceeds 2m and/or you have installed more than one bend, there will be a noticeable reduction in extraction power.

There is no power to the appliance:

- Check there is not a power cut
- Check there is power to the electric socket/appliance
- Check the fuse in the plug and/or spur (Must be 13amp)

# Here For You

---

## After-sales assistance

If you continue to experience problems with your Cooker Hood, please call the Montpellier customer service helpline on: **01759 487839**.

Please have all your product details available, including the model number, serial number, date of purchase, and your retailer's details before registering a fault.

The service call cannot progress without this information.

## Your 2 year Manufacturer's guarantee

THIS DOES NOT AFFECT YOUR STATUTORY RIGHTS.

Your new Montpellier appliance carries a free guarantee which protects you against the cost of repairs during the first 24 months from date of purchase provided that:

Any claim is accompanied by evidence of the model reference, model serial number and proof of purchase, such as a Sales Receipt, showing that the appliance was purchased within the 24 months prior to the date of claim.

## What is not covered under the Guarantee

- Any appliance not correctly installed and operated in accordance with the manufacturer's instructions.
- Any appliance that is used for anything other than domestic purposes.
- Any defect caused by accident, misuse, unauthorised modification or inexpert repair.
- Cost of Call-out where a fault cannot be found with the appliance.
- Cost of Call-out for work covering routine maintenance, such as, but not exclusively, cleaning of filters or defrosting.
- Cost of Call-out for work required to correct the alignment of doors following door reversal procedures carried out by you.
- Use of the appliance by anyone other than the Householder.
- Use in any commercial environment.
- Consumable items, such as, but not exclusively, fuses in plugs, bulbs and breakable items which require routine replacement.
- Repair costs incurred that have not been authorised by Montpellier and/or carried out by a non-approved Montpellier engineer.

## YOUR GUARANTEE IS VALID ONLY IN THE UK & ROI.

To register your appliance simply complete the card in your appliance pack and return it with a stamp affixed or alternatively you can register online at **[www.montpellier-appliances.com/support](http://www.montpellier-appliances.com/support)**

## SERVICE HELP-LINE

Should your appliance develop a fault, please call the Montpellier customer service helpline on: **01759 487839**.

Please remember to have all your product details available, including the model number, serial number, date of purchase and your retailer's details before registering a fault.

Your service call cannot progress without this information.

---

**Montpellier Domestic Appliances Ltd.**

Unit 1, Tewkesbury Retail Park, Northway Lane,  
Tewkesbury, Gloucestershire GL20 8JU

**[www.montpellier-appliances.com](http://www.montpellier-appliances.com)**



The symbol on the product or on its packaging indicates that this product may not be treated as household waste. Instead it shall be handed over to the applicable collection point for the recycling of electrical and electronic equipment. By ensuring this product is disposed of correctly, you will help prevent potential negative consequences for the environment and human health, which could otherwise be caused by inappropriate waste handling of this product. For more detailed information about recycling of this product, please contact your local city office, your household waste disposal service or the shop where you purchased the product.