

Montpellier

THE PERFECT BALANCE OF FUNCTION AND STYLE

LAUNDRY - DISHWASHING - COOKING - COOLING

Installation and Operating Instructions



Integrated Vented Tumble Dryer MTDI7S - 7kg Sensor Dryer

Please read these instructions carefully before attempting to install or use this appliance.
We recommend that you keep these instructions in a safe place for future reference.

Welcome

Thank you for choosing this Montpellier Tumble Dryer.

Our Tumble Dryers have been designed to provide you with the best combination of style, reliability and performance to give you years of trouble-free use.

You may be familiar with a similar product, but please take time to read these instructions carefully before installing or using your Tumble Dryer to ensure you get the most from your purchase.

We recommend that you keep this manual in a safe place for future reference.

**2
YEAR
GUARANTEE**

— PARTS & LABOUR —

ACROSS ALL OUR MODELS

Montpellier

www.montpellier-appliances.com

Your Tumble Dryer is covered by a comprehensive two year Parts & Labour Guarantee. In the unlikely event that you experience a problem with your Tumble Dryer, you can rest assured that you are fully protected against the cost of repairs for the first 24 months. Please note that any claim must be accompanied by the model reference number, serial number and proof of purchase.

To activate your guarantee, you will need your product serial number. This can be found on the rear of the machine.

There are two ways to register your Guarantee:

- **Online:** Visit the Support page on our website and complete the online Product Registration form. www.montpellier-appliances.com
- **By Post:** Simply detach and fill in the form provided, attach a stamp and send it in the post. Don't forget to include your e-mail address so that we can send confirmation through to you.



Note: We are unable to take registrations over the phone.

IMPORTANT: PLEASE READ THESE
INSTRUCTIONS THOROUGHLY BEFORE USING
THIS APPLIANCE. KEEP THEM IN A SAFE PLACE FOR
FUTURE REFERENCE.

IMPORTANT USER INFORMATION

These notes are provided in the interest of safety. You must read them carefully before installing or using this appliance

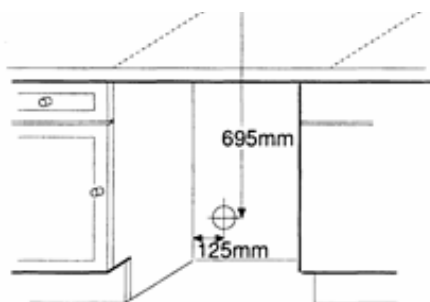
- This appliance can be used by children aged from 8 years and above and persons with reduced physical, sensory or mental capabilities or lack of experience and knowledge if they have been given supervision or instruction concerning use of the appliance in a safe way and understand the hazards involved. Children shall not play with the appliance. Cleaning and user maintenance shall not be carried out by children without supervision. Children of less than 3 years should be kept away unless continuously supervised.
- This tumble dryer is intended for domestic use only
- The room must be adequately ventilated to avoid back flow of gases into the room from appliances burning gas or any other fuels. This includes open fires.

- Exhaust air must not be discharged into a flue which is used for exhausting fumes from appliances burning gas or any other fuels.
- Any electrical work required to install the appliance should be carried out by a qualified person.
- This tumble dryer should be serviced by an appointed service organization and only genuine spare parts used.
- It is dangerous to alter or modify the product in any way, other than fitting authorized accessories.
- It is important to clean the lint filter after each drying cycle.
- Under no circumstances should anything other than the recommended articles be placed in the tumble dryer.
- Items that have been soiled with substances such as cooking oil, acetone, alcohol, petrol, kerosene, spot removers, turpentine, waxes and wax removers should be washed in hot water with an extra amount of detergent before being dried in the tumble dryer.
- Do not place articles which have been in contact with dry cleaning fluid or other flammable substances in the tumble dryer.
- Do not attempt to dry dripping wet articles.
- Remove all objects from pockets such as lighters and matches.
- Items such as foam rubber (latex foam), shower caps, waterproof textiles, rubber backed articles and clothes or pillows fitted with foam rubber pads should not be dried in the tumble dryer.

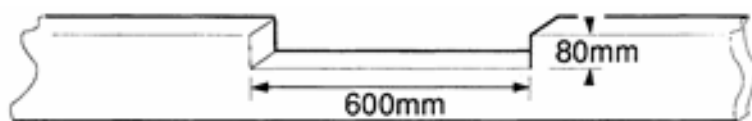
INSTALLATION:

The tumble dryer is fully compatible with any 600mm deep kitchen units and complies with stringent EEC regulations.

Your dryer is provided with a vent hose which will extend to approx. 2.4m (8ft). We strongly recommend that this is vented through the wall with the attachment provided. The position of the hole (100mm diameter) for the vent directly behind the tumble dryer is shown in the diagram.



If the through the wall vent is to be positioned other than behind the dryer, the vent hose should be positioned at floor level and through adjacent side panel to a relevant position. The plinth must be cut-out to accommodate the air vent grill at the bottom front of the tumble dryer.



IMPORTANT:

The air vent at the front of the appliance must never be covered or blocked in any way as this will cause the dryer to overheat.

This appliance must not be installed behind a lockable door, a sliding door or a door with hinges on the opposite side to that of the tumble dryer.

The dryer should not be installed behind a lockable door, a sliding door or a door with hinges on the opposite side to that of the tumble dryer.

ELECTRICAL CONNECTIONS: We strongly recommend that any electrical work is carried out by a qualified person complying with the IEE 17th addition of the electrical regulations.

IMPORTANT:

Please remember that the tumble dryer must be capable of being switched off, (disconnected from the supply), when fitted in position.

ADDITIONAL INSTALLATION INFORMATION:

Please see below for detailed fitting sizes with images to help explain the actual product and dimensional proportions on the machine and its fitting bracket/plinth.



The actual machine height is 80.0cm, without the fixing bracket/plinth attached.

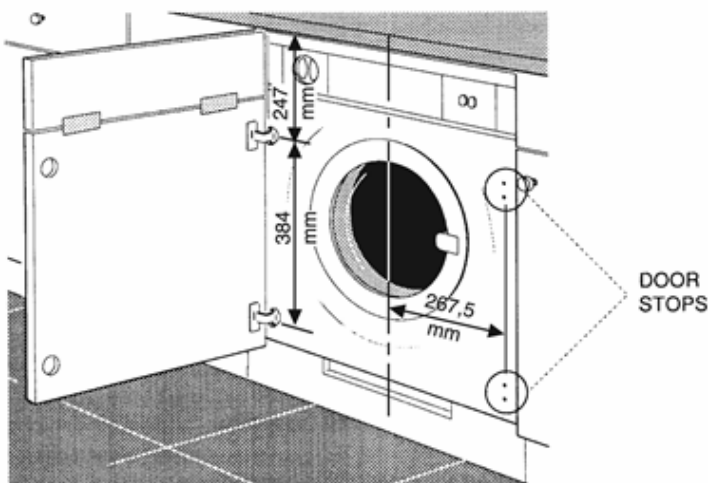
The bracket/plinth supplied must be fitted to the machine, if not already. It is a stability mounting bracket and aids installation as you have adjustable feet at the bottom of the plinth which can be adjusted from the standard 12mm to 30mm if needed. You can remove the feet if the machine is to be fitted via the bracket to a level surface. This gives you 85.3cm total height.



The bracket/plinth supplied measures at 53mm with 12mm added for the feet. So please take into account the feet measure 12mm at their lowest setting up to 30mm fully extended. This now gives you a total height including bracket and feet of 86.5 (lowest) – 89.0cm (max) depending on feet extension. Please allow 1-2mm difference if fitting to exact measurements.

THE DÉCOR DOOR:

The hinges can be fastened through the pre-drilled holes on either the left or right hand with the door stops being fitted on the other side.



TECHINCAL DATA:

Overall Dimensions:

H: 86.5-89 W: 59.5 D: 53cm

Maximum dry weight of cotton, linen – **7.0kg**
& synthetics – **7.0kg**.

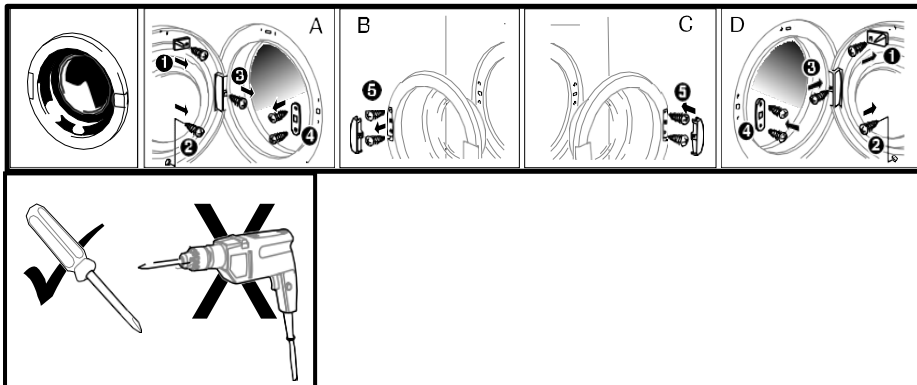
For electrical ratings see plate on rear of machine.

Fuse rating: **13amp**.

DOOR REVERSAL:

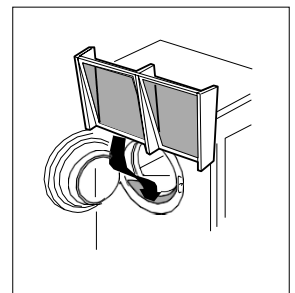
APPLIANCE DOOR

The door on the dryer can be positioned either with the left or right hand hinging. Please follow illustration below to change the door position.



THE FILTER:

The filter is found, as seen from the diagram, by opening the door and must always be in position when drying items in the appliance. To allow the dryer to operate efficiently it should be cleaned after each drying cycle. Do not be alarmed by the amount of fluff deposited on the mesh. It is not due to excessive wear caused by the dryer but more an indication of its efficient operation. All fabric loses fluff when drying but it goes unnoticed into the air. In a tumble dryer it simply collects in the filter.



DO NOT'S....

DO NOT - Overload the dryer.

DO NOT - Dry items singly as they tend to roll up and so increase drying time.

DO NOT - Dry woolen or wool mixture articles unless the article is labelled as suitable.

DO NOT - Allow venting hose (where applicable) or filter to become blocked.

DO NOT - Allow fluff to accumulate around the tumble dryer.

NEVER SWITCH THE DRYER OFF AND LEAVE A HOT LOAD IN THE DRUM – RISK OF FIRE!

ANY PROBLEMS:

If the clothes are not dry after normal drying time:

- Check the filter is clean
- Check that you used the correct heat setting.
- Check that the venting hose is not blocked (sometimes a strong wind may cause a back pressure.
- Check that you have not set the timer within a cool down period.

NOTE: NEVER SWITCH THE DRYER OFF AND LEAVE A HOT LOAD IN THE DRUM – RISK OF FIRE!

When drying large items such as sheets, we suggest you periodically stop the dryer to redistribute the load. To stop the machine during a programme, simply open the door, the drum will stop rotating automatically and restart when you close the door. Press the start button to restart the machine.

WARNING: Never stop a tumble dryer before the end of a drying cycle unless all items are quickly removed and spread out so the heat is dissipated.

AFTER REMOVING THE DRIED CLOTHES: ALWAYS CLEAN THE FILTER.

- Failure to clean the filter will extend drying times and cause the safety cut-out to operate.
- Pull the filter upwards and away from the appliance.
- Remove threads or fluff by hand or with a soft brush.
- Slide the filter back.
- Wash the filter occasionally in detergent solution and with a soft brush to remove small particles.

TO AVOID MINOR FAULTS:

If the clothes are not dry after normal drying time:

- Check that you have used the correct heater setting.
- Check the fuse in the moulded plug.
- Check that the lint filter has been cleaned. A blocked filter will restrict the airflow.
- Check that your dryer is heating – The right side below the door should feel warm after the first 10-15 minutes of its programme. Failure to heat may indicate the safety cut-off has operated. To reset, simply press the red button at the rear of the machine. If operated, a sharp click will be heard. This cut-off only operates if the air flow is severely restricted so make sure the filter is clean, the air inlets and outlets at the front and back are not blocked, and that all other restrictions are removed before re-starting. If the cut-out continues to operate after checking the above points, you should contact your service agent on **03333 234 473**.

Your dryer is designed to operate in a room temperature range of 5°C to 30°C

CONTROL PANEL GUIDE:



1. **PROGRAMME SELECTOR:** Choose the final dryness of the load by selecting the desired dryness setting (see the programme chart). The dryer will stop automatically when the chosen dryness is achieved. Note: the use of an iron dry programme will use 30% less energy than a cupboard dry programme.
2. **HEAT SETTINGS:** High – For fabrics insensitive to higher temperatures, such as cotton.
Low – For temperature sensitive clothes.
3. **START BUTTON:** Press to start the drying cycle.
4. **ANTI-CREASE ACTIVE drying NEON** When lit constantly, the neon indicates that the cycle is completed and clothes can be removed. To reduce creasing of clothes, anti-crease will automatically start once the drying cycle is complete.

PROGRAMME DESCRIPTIONS

- | | |
|-------------------|-------------------|
| 1. extra dry | 5. iron dry |
| 2. cupboard dry | 6. damp dry |
| 3. mid dry | 7. timed dry |
| 4. extra iron dry | 8. 30 mins airing |

Program 1 – Extra dry: clothes are dry enough to be put away

Program 2 – Cupboard dry: clothes are dry enough to be put away

Program 3 – Mid dry: depending upon fabric, clothes are generally dry enough to be put away

Program 4 – Extra iron dry: clothes are almost dry but can be easily ironed

Program 5 – Iron dry: clothes are slightly damp and ready to be ironed

Program 6 – Damp dry: clothes are damp and ready to be ironed

Program 7 – 30 minute timed drying program

Program 8 – 30 minute timed 'airing' program; useful for freshening up clothing.

Programs 1-7 can be operated on either full heat or half heat setting and have a 12 minute cool-down period at the end of the cycle

Program 8 operates without the heater (regardless of the heat switch setting), circulating air through the dryer at the ambient temperature.




PLEASE NOTE: THE DRYER WILL CONTINUE TO RUN IN ANTI-CREASE MODE UNTIL THE DOOR IS OPENED

DRYING YOUR LAUNDRY:

BEFORE DRYING

Check care labels inside the garments

CARE LABELS YOU MAY FIND ON YOUR FABRICS

	'Tumble drying beneficial'
	'Do not tumble dry'
	'Dry flat'

Do not tumble dry woollen or wool mixture articles unless the article is labelled to be suitable due to possibility of shrinkage.

Place delicate articles, e.g. tights and scarves, inside a pillowcase.

Sort out clothes into groups of similar fabrics and colours.

Check the care label inside the garment.

We suggest that a fabric conditioner be used to reduce static electricity.

Delicate articles e.g. tights should be placed inside a pillowcase.

It is better to dry small and large articles together.

Do not dry unwashed items in the tumble dryer

Remove all objects from pockets such as lighters and matches.

To avoid the need to iron easy care polyester/cotton items, it is better to only dry small loads (i.e. half fill the drum). It is better to dry small and large articles together.

Do not overload the dryer or dry large bulky items such as duvets or sleeping bags as it is important that the air flow through the dryer is not obstructed.

RUNNING THE MACHINE:

The standard cotton programme is suitable to dry normal wet cotton laundry. It is the most efficient programme in terms of energy consumption for drying wet cotton laundry.

Your appliance is a reversing, small door opening. A full load will typically take 135 minutes and will use approximately 4,39kWh of electricity. A half load will typically take 76 minutes and will use approximately 2,38 kWh of electricity.

The power consumption of the off-mode and the left-on mode is zero

Open the door, Load the clothes loosely into the drum.

Load sheets first starting with one corner.

Close the door & dry your hands.

Switch on the machine at the socket/power supply.

Select correct heat position (See programme chart on fascia panel).

Set the programme to the required dryness setting (See programme chart on fascia panel).

Press the start button.

The drum will rotate in anticlockwise direction for a short period of time.

The drum will then begin to rotate clockwise and will stop automatically when your clothes are dry.

The drum will stop and rotate anti-clockwise every few seconds to reduce creasing.

There is an automatic 12 minute cool down period at the end of every cycle, during which the heater is switched off. This is to help minimize creasing.

After each of the programmes, the machine goes into anti-crease. This feature rotates the drum for briefly every 6 minutes until the dryer is stopped or the door is opened.

Suppliers name or trade mark	MONTPELLIER
Model identifier	MTDI7S
Rated capacity at full load	7kg
Appliance type	Air Vented
Energy efficiency class	C
Energy consumption of the appliance*	519kWh
The figures above is based on 160 drying cycles of the standard cotton programme at full and partial load and the consumption of the low-power modes. Actual energy consumption per cycle will depend on how the appliance is used.	
Automatic/non-automatic	Automatic
EU Ecolabel	N/A
E_{dry}	4.39kWh
$E_{dry/2}$	2.38kWh
$E_{g_{dry}}$	N/A
$E_{g_{dry/2}}$	N/A
$E_{g_{dry,a}}$	N/A
$E_{g_{dry/2,a}}$	N/A
Off mode power (P_o)	0W
Left on mode power (P_l)	0W
Duration of left-on mode	N/A
The standard cotton programme used at full and partial load is the standard drying programme to which the information in the label and the fiche relates. This programme is suitable for drying normal wet cotton laundry. It is the most efficient programme in terms of energy consumption for cotton.	
T_t	101mins
T_{dry}	135mins
$T_{dry/2}$	76mins
Condensing efficiency class	N/A
C_t	N/A
C_{dry}	N/A
$C_{dry/2}$	N/A
Sound power level	62dBA
Built in/not built in	Model MTDI7S is intended on being built in.

Here For You

After-sales assistance

If you continue to experience problems with your Tumble Dryer, please call the Montpellier customer service helpline on: **01759 487839**.

Please have all your product details available, including the model number, serial number, date of purchase, and your retailer's details before registering a fault.

The service call cannot progress without this information.

Your 2 year Manufacturer's guarantee

THIS DOES NOT AFFECT YOUR STATUTORY RIGHTS.

Your new Montpellier appliance carries a free guarantee which protects you against the cost of repairs during the first 24 months from date of purchase provided that:

Any claim is accompanied by evidence of the model reference, model serial number and proof of purchase, such as a Sales Receipt, showing that the appliance was purchased within the 24 months prior to the date of claim.

What is not covered under the Guarantee

- Any appliance not correctly installed and operated in accordance with the manufacturer's instructions.
- Any appliance that is used for anything other than domestic purposes.
- Any defect caused by accident, misuse, unauthorised modification or inexperienced repair.
- Cost of Call-out where a fault cannot be found with the appliance.
- Cost of Call-out for work covering routine maintenance, such as, but not exclusively, cleaning of filters or defrosting.
- Cost of Call-out for work required to correct the alignment of doors following door reversal procedures carried out by you.
- Use of the appliance by anyone other than the Householder.
- Use in any commercial environment.
- Consumable items, such as, but not exclusively, fuses in plugs, bulbs and breakable items which require routine replacement.
- Repair costs incurred that have not been authorised by Montpellier and/or carried out by a non-approved Montpellier engineer.

YOUR GUARANTEE IS VALID ONLY IN THE UK.

To register your appliance simply complete the card in your appliance pack and return it with a stamp affixed or alternatively you can register online at **www.montpellier-appliances.com/support**

SERVICE HELP-LINE

Should your appliance develop a fault, please call the Montpellier customer service helpline on: **01759 487839**.

Please remember to have all your product details available, including the model number, serial number, date of purchase and your retailer's details before registering a fault.

Your service call cannot progress without this information.

Montpellier Domestic Appliances Ltd.

Unit 1, Tewkesbury Retail Park, Northway Lane,
Tewkesbury, Gloucestershire GL20 8JU

www.montpellier-appliances.com



The symbol on the product or on its packaging indicates that this product may not be treated as household waste. Instead it shall be handed over to the applicable collection point for the recycling of electrical and electronic equipment. By ensuring this product is disposed of correctly, you will help prevent potential negative consequences for the environment and human health, which could otherwise be caused by inappropriate waste handling of this product. For more detailed information about recycling of this product, please contact your local city office, your household waste disposal service or the shop where you purchased the product.