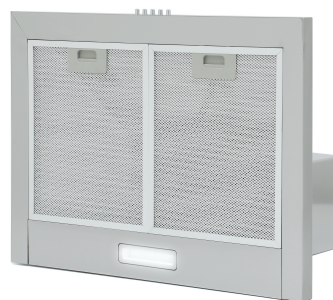
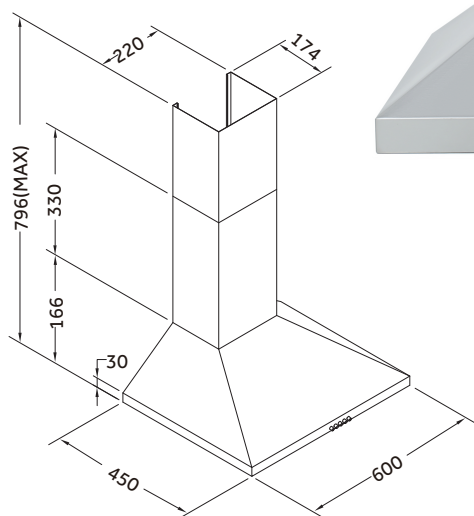


## MH600X

60cm Chimney Hood



### Specification

3 Speed Fan with Push Controls  
1 x 1.5 Watt LED Lighting  
Height Adjustable Chimney Section

A-rated Energy  
Washable Aluminium Filter Cassettes

<b>Controls</b>	Push Button Controls
<b>Noise Level</b>	52dB (max)
<b>Motor Power</b>	25W
<b>Max Air Flow</b>	450m <sup>3</sup> /h
<b>Energy Consumption</b>	15kWh/annum
<b>Features</b>	A Energy Rating, Suitable for ducting or re-circulation, Cable supplied (1 metre), Fitted UK plug
<b>Colour</b>	Stainless Steel
<b>Dimensions</b>	H496-796 (max) W600 D450mm
<b>Gross/Net Weight</b>	8.2/7.8kg
<b>Guarantee</b>	2 Year Parts and Labour Guarantee
<b>Optional Extras</b>	Duct Model: DUCT-05/07, Filter Model: CHAR-04, Chimney Extensions available via Customer Services or your nearest retailer.